

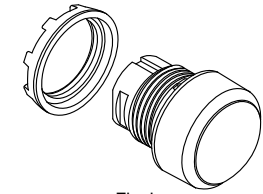
Press to test pilot lights

Press to test pilot lights

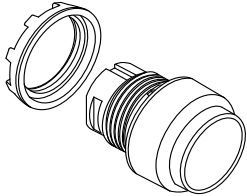
Options

Catalog number characters

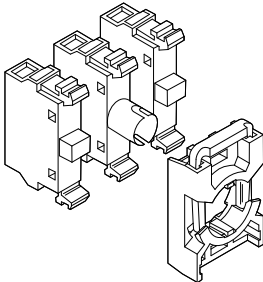
Momentary, Flush			M	P	1	-			
Momentary, Extended			M	P	3	-			
Bezel, Black Plastic with Holder, 1/1 Contacts						-	KL		
Bezel, Chrome Metal with Holder, 1/1 Contacts						-	ML		
Illuminated without Lamp Block								PT	
Full Voltage Lamp Block, (select Filament bulb or LED from below)						-		FPT	
Resistor Lamp Block, (select 120V or 240V bulb or LED only)						-		RPT	
Filament bulb, 6V						-			6
Filament bulb, 12V						-			7
Filament bulb, 24V						-			8
Filament bulb, 48V						-			9
Filament bulb, 120V						-			1
LED, 12 V AC						-			L7
LED, 24 V AC/DC						-			L8
LED, 48 V AC/DC						-			L9
LED, 60 V AC/DC						-			L60
LED, 120V AC						-			L1
LED, 120 V AC/DC						-			L13
LED, 240 V AC						-			L2
Transformer Block, 110-127/6V, includes 6V fill. bulb						-			TPT1
Transformer Block, 220-240/6V, includes 6V fill. bulb						-			TPT2
Transformer Block, 380-420/6V, includes 6V fill. bulb						-			TPT3
Transformer Block, 440-480/6V, includes 6V fill. bulb						-			TPT4
Transformer Block, 500-600/6V, includes 6V fill. bulb						-			TPT5
Transformer Block, 110-127/24V, includes 24V fill. bulb						-			TPT6
Transformer Block, 220-240/24V, includes 24V fill. bulb						-			TPT7
Transformer Block, 380-420/24V, includes 24V fill. bulb						-			TPT8
Transformer Block, 440-480/24V, includes 24V fill. bulb						-			TPT9
Transformer Block, 110-127/24V, includes 24V LED						-			TPTL1
Transformer Block, 220-240/24V, includes 24V LED						-			TPTL2
Transformer Block, 380-420/24V, includes 24V LED						-			TPTL3
Transformer Block, 440-480/24V, includes 24V LED						-			TPTL4
Button Color - Red									R
Button Color - Green									G
Button Color - Yellow									Y
Button Color - Blue									L
Button Color - White									W
Button Color - Clear									C
30mm Black Plastic Adaptor Ring ②	G	1							
30mm Chrome Metal Adaptor Ring ②	G	2							



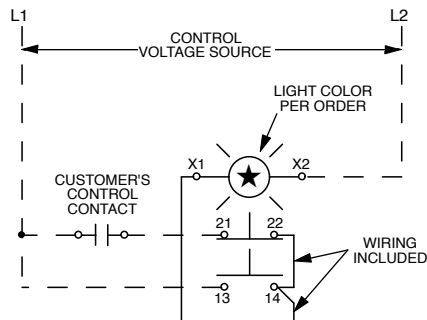
Flush



Extended



Schematic



Press- to-test schematic

② No filament bulb, LED or transformer block can be combined with "Illuminated without Lamp block" selection.